

**Somerville
Housing
Group**

70-80 Webster Avenue
Somerville, MA

**EVb DESIGN/
TWINSPINE** incorporated
architects, planners & consultants

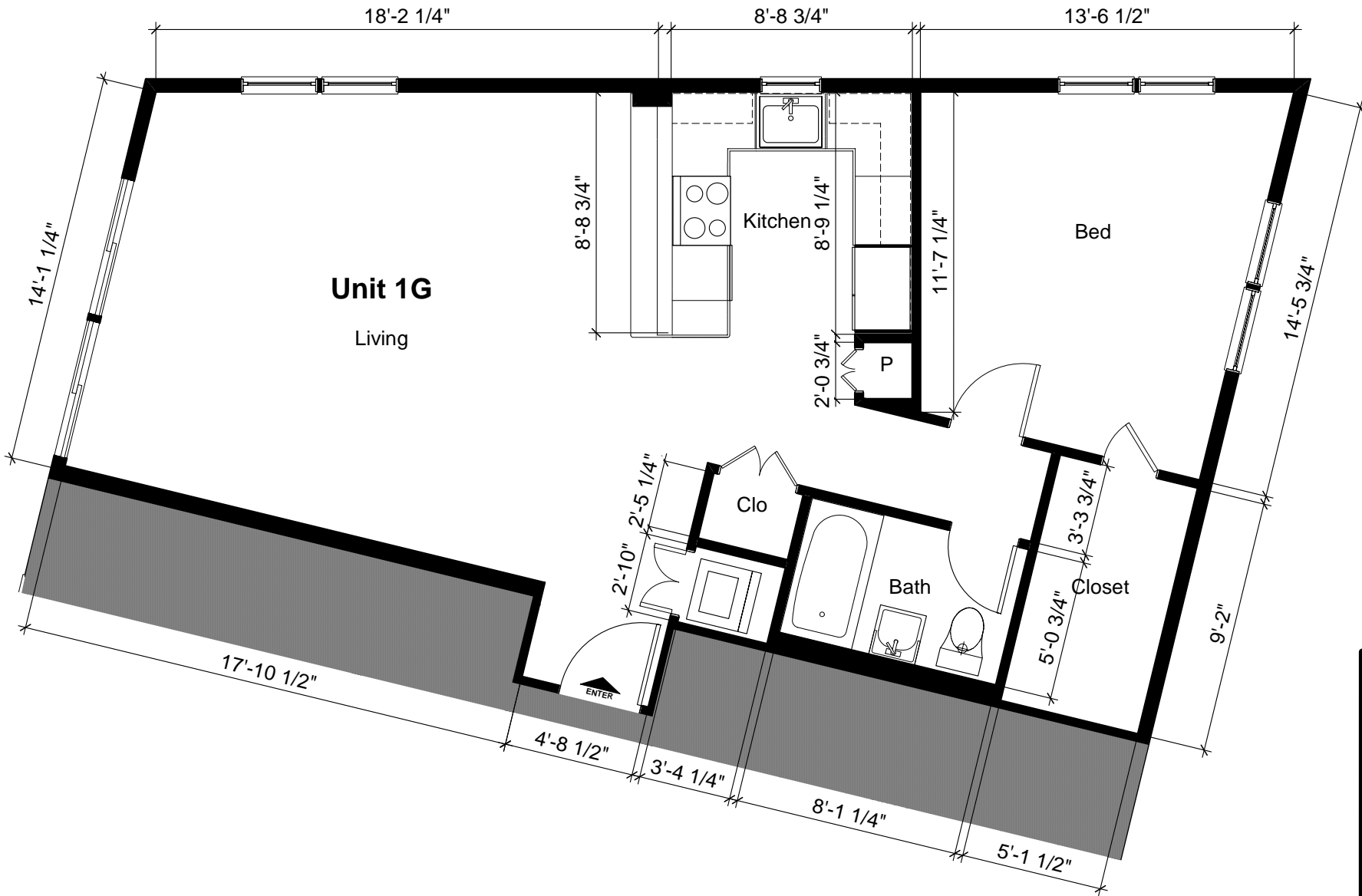
35 Medford St
Somerville, MA 02143

phone(617) 623 2222
phone(617)629 0059
fax(617)629 2971

Project no.:	SHG-3
Drawn by:	
Date:	8-20-07
Checked by:	
Revisions:	

Notes:

1G



1 Unit G, 1st Floor
 1G Scale: 3/16" = 1'-0"
 Unit Area = 782 sqft

