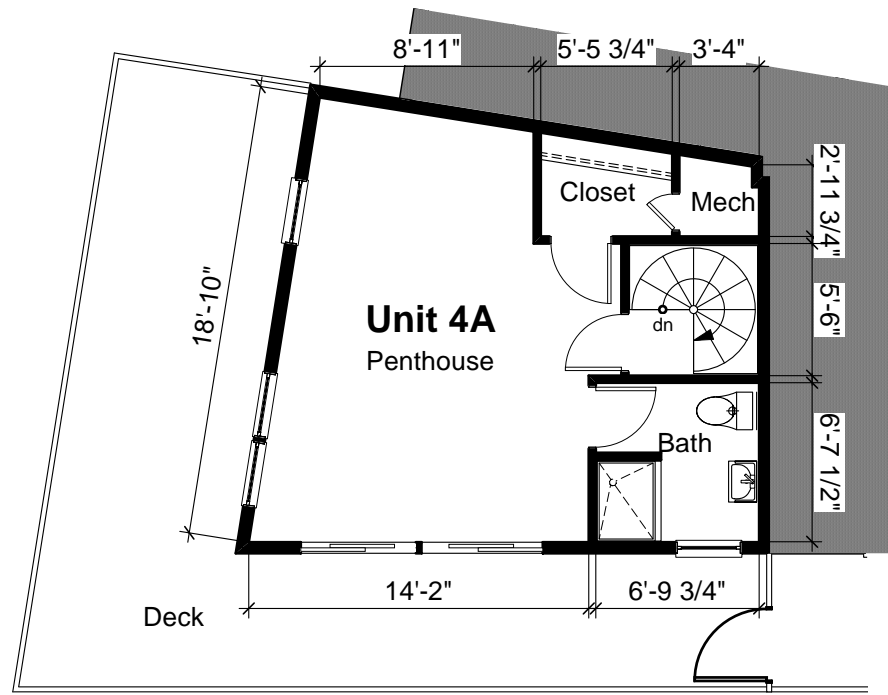


Somerville  
Housing  
Group

70-80 Webster Avenue  
Somerville, MA



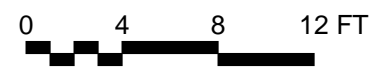
EvB DESIGN/  
TWINSPINE incorporated  
architects, planners & consultants

35 Medford St  
Somerville, MA 02143

phone(617) 623 2222  
phone(617)629 0059  
fax(617)629 2871

Project no.:	SHG-3
Drawn by:	
Date:	8-20-07
Checked by:	
Revisions:	
Notes:	

1 Unit A, 5th Floor  
4AP Scale: 1/8" = 1'-0"  
Total Unit Area = 1445 sqft



4AP