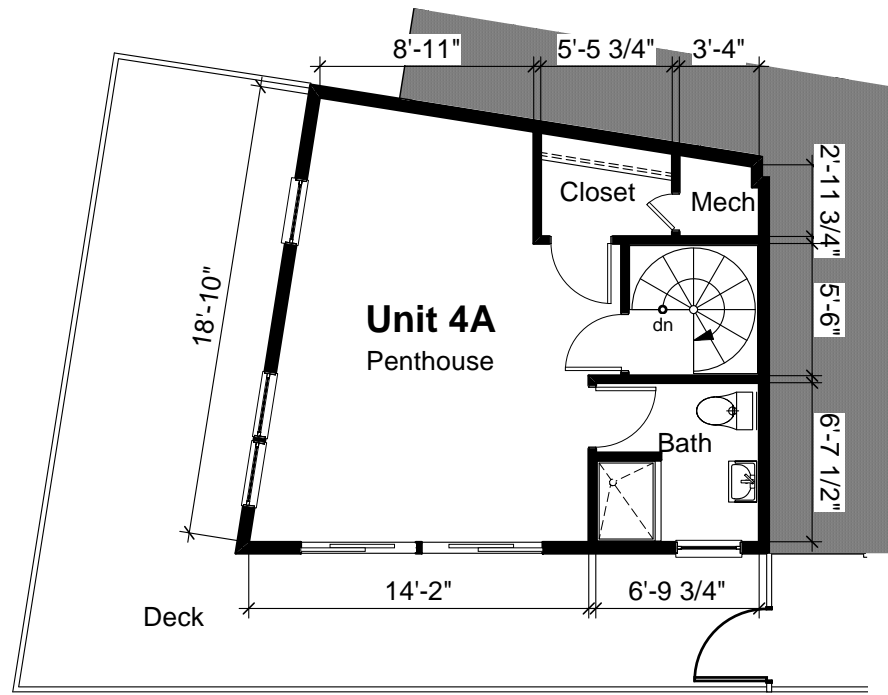


Somerville
Housing
Group

70-80 Webster Avenue
Somerville, MA

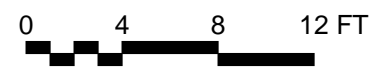


EvB DESIGN/
TWINSPINE incorporated
architects, planners & consultants

35 Medford St
Somerville, MA 02143
phone(617) 623 2222
phone(617)629 0059
fax(617)629 2871

Project no.:	SHG-3
Drawn by:	
Date:	8-20-07
Checked by:	
Revisions:	
Notes:	

1 Unit A, 5th Floor
4AP Scale: 1/8" = 1'-0"
Total Unit Area = 1445 sqft



4AP