

Somerville
Housing
Group

70-80 Webster Avenue
Somerville, MA

EvB DESIGN/
TWINSPINE incorporated
architects, planners & consultants

35 Medford St
Somerville, MA 02143

phone(617) 623 2222
phone(617)629 0059
fax(617)629 2871

Project no.: SHG-3

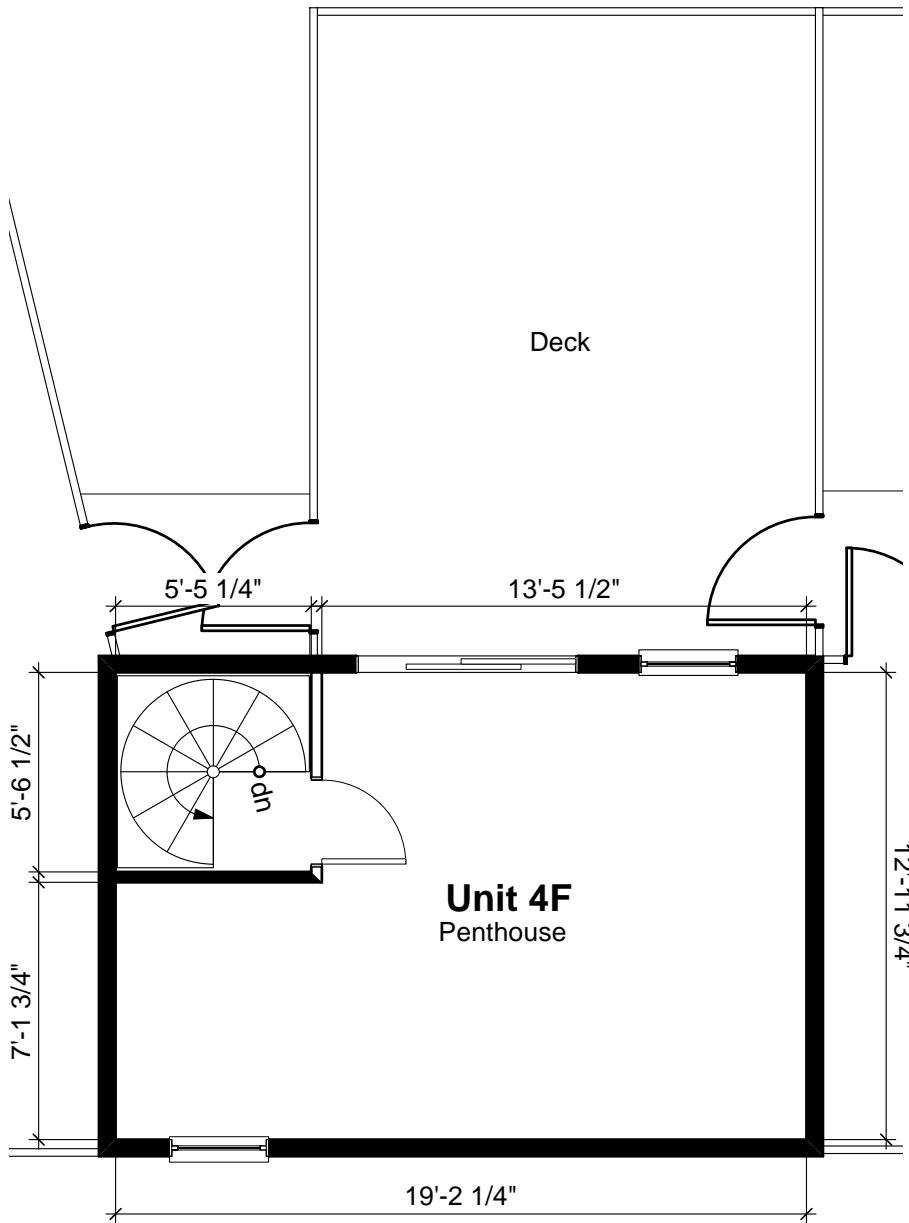
Drawn by:

Date: 8-20-07

Checked by:

Revisions:

Notes:



1
4FP

Unit F 5th Floor

Scale: 3/16" = 1'-0"

Total Unit Area = 903 sqft



4FP