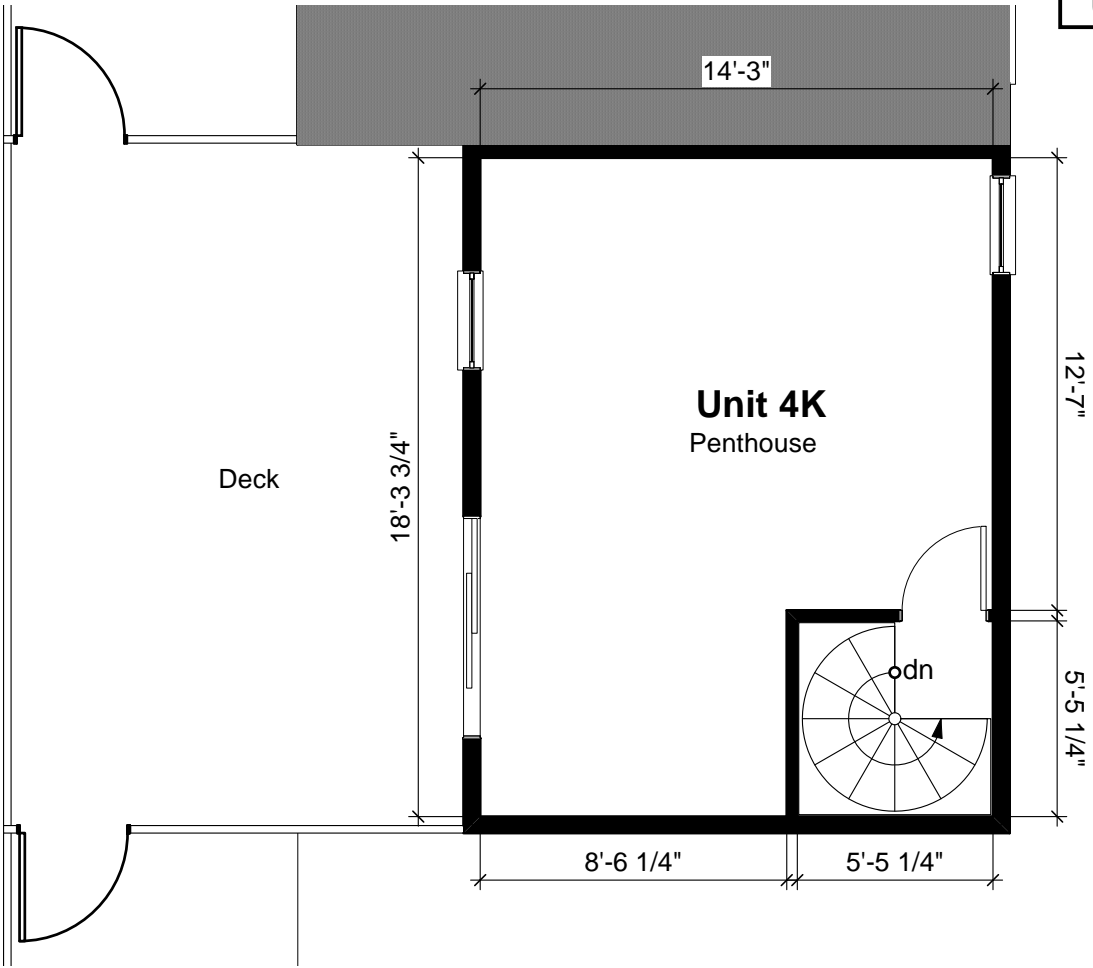


Somerville
Housing
Group

70-80 Webster Avenue
Somerville, MA



**EvB DESIGN/
TWINSPINE** incorporated
architects, planners & consultants

35 Medford St
Somerville, MA 02143

phone(617) 623 2222
phone(617)629 0059
fax(617)629 2871

Project no.: SHG-3

Drawn by:

Date: 8-20-07

Checked by:

Revisions:

Notes:

1
4KP

Unit K, 5th Floor
Scale: 3/16" = 1'-0"
Total Unit Area = 961 sqft



4KP